



FOR SALE

LOCATED IN THE
HEADINGLEY BUSINESS PARK
HEADINGLEY, MANITOBA

BUILD TO SUIT AVAILABLE

COMMERCIAL LOTS FOR IMMEDIATE CONSTRUCTION

Property Summary

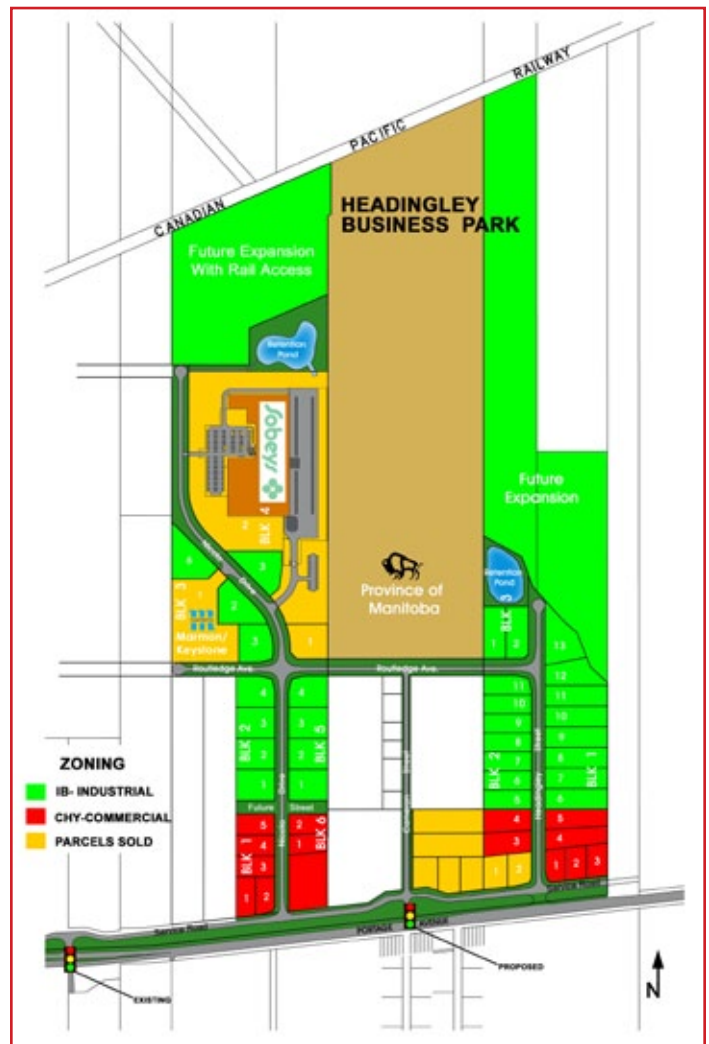
Available	14 Commercial Lots
Sizes	Range from 0.89 - 1.59 Acres
Contiguous Sizes Available:	4.27 Acres 5.96 Acres
Prices	Starting at \$175,000/Acre
Zoning	CHY - Highway Commercial

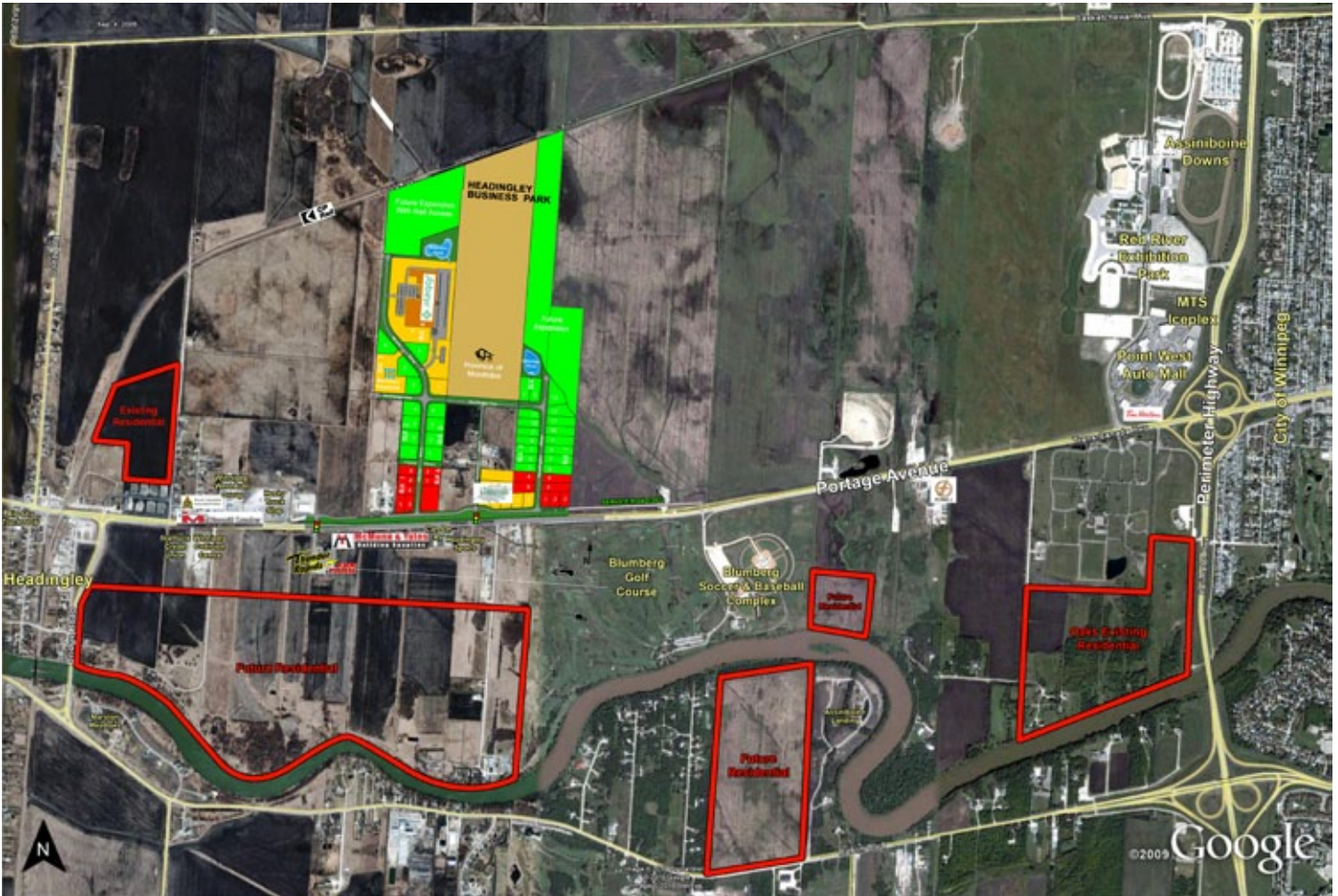
Features

- Municipal Sewer & Water
- Gas, Hydro (3-Phase), MTS to lot line.
- Heavy duty asphalt roads.
- Ready to build lots.
- Low permit fees (quick turnaround of permits)
- No business tax.
- Low property taxes.
- Businesses in the area: Canoak Flooring, McMunn & Yates, Thunder Rapids, McDiarmid Lumber, Winnipeg Collision Centre, Starbuck Credit Union, Can Am RV, Husky Truck Stop, Winnipeg West Auto, and Headingley Sports Centre.

Location

- Located 5 minutes west of the Perimeter Highway.
- Controlled intersection access to Trans Canada Highway.
- Growing community with over 200 residential lots to be built in next 5 years.





HEADINGLEY BUSINESS PARK

INQUIRIES

SHINDICO REALTY INC.

IAN CORBETT

200-1355 Taylor Avenue
Winnipeg, Manitoba R3M 3Y9
Phone: (204) 474-2000 - Fax: (204) 284-7115
Direct: (204) 928-8231
Cell: (204) 688-7653
Email: icorbett@shindico.com
www.shindico.com

Shindico

Succeeding By Helping Others Succeed

The information contained herein is based upon materials secured from sources that we believe to be reliable, however Shindico Realty Inc. and any other parties affiliated or associated with it make no representations or warranties, express or implied, as to the accuracy of the information including as to size, age or exact location and such parties assume no responsibility for any errors and/or omissions with respect thereto. The reader shall be responsible to assure itself as to the accuracy of any information contained herein and bears all risk with respect to any inaccuracies. 012511